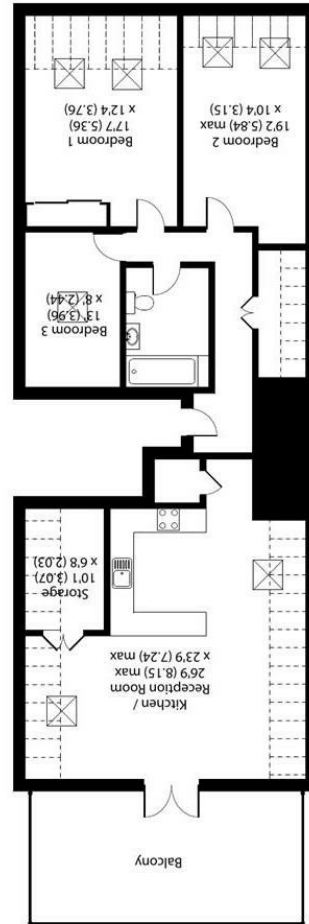


**Important Information**  
 All appliances listed in these details are only 'as seen' and have not been tested by Gibson Lane, nor have we sought certification of warranty or service, unless otherwise stated. Measurements, areas and distances are approximate. Floor plans and photographs are for guidance purposes only and must not be relied upon for any purpose. These details are offered on the understanding that all negotiations are made through this company. Neither these particulars, nor verbal representations, form part of any offer or contract, and their accuracy cannot be guaranteed.

Environment Impact (CO <sub>2</sub> ) Rating	Energy Efficiency Rating
 Environment Impact (CO <sub>2</sub> ) Rating: C	 Energy Efficiency Rating: B

Floor plan produced in accordance with RICS Property Measurement Standards incorporating International Property Measurement Standards (IPMS Residential). © Gibson Lane, 2022.

**SECOND FLOOR**



Approximate Area = 1330 sq ft / 123.5 sq m  
 Including Limited Use Area(s) = 242 sq ft / 22.5 sq m  
 For identification only - Not to scale

Denotes restricted head height



34 Richmond Road  
 Kingston upon Thames  
 Surrey  
 KT2 5ED  
 www.gibsonlane.co.uk  
 Tel: 020 8546 5444

**gibson lane**



23a Church Road  
 Kingston Upon Thames KT1 3DJ



## 23a Church Road

Kingston Upon Thames KT1 3DJ

Guide Price £585,000

An immaculately presented three bedroom top floor conversion apartment situated in this central location in Kingston.

### Description

An immaculately presented three double bedroom top floor conversion flat with accommodation approaching 1350 sq ft. This apartment has a well balanced layout perfect for entertaining with an open plan modern kitchen/living/dining room with patio doors leading out onto a large private south facing roof terrace, with stunning roof top views. To the opposite side of the apartment are three double bedrooms and impressive family bathroom. There is the added bonus of solar panels on the roof and an off street parking space to the front.

### Situation

Church Road is conveniently situated for Norbiton station and Kingston town centre with its extensive range of shops, bars and restaurants and overground station with a direct service into Waterloo. Fairfield Park offering its many acres of open space is nearby and the area is well served by local buses.

**Tenure:** Leasehold

**Local Authority:** Kingston Upon Thames

